

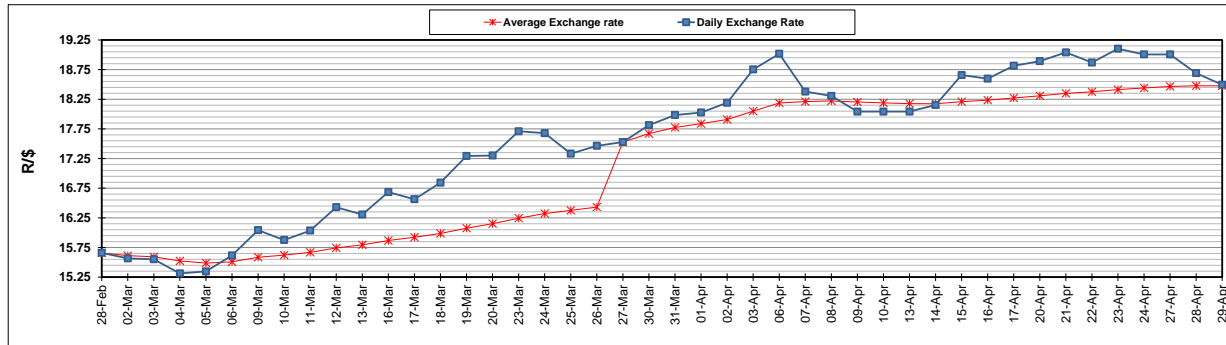
	PETROL 95 ULP	PETROL 93 ULP & LRP	DIESEL 0.05%	DIESEL 0.005%	ILL. PAR.
GAUTENG PUMP PRICE (SA c/l) AS FROM 01/04/2020	1,396.000	1,376.000	-	-	-
WHOLESALE PRICE (SA c/l) AS FROM 01/04/2020	-	-	1,269.560	1,273.960	672.828
SINGLE NATIONAL MAXIMUM RETAIL PRICE	-	-	-	-	840.000
BASIC FUEL PRICE - 29/04/2020 (SA c/l)	301.140	288.755	271.353	276.632	149.740
PRESS RELEASE CONTRIBUTION TO BFP 01/04/2020 - 29/04/2020 (SA c/l)	448.770	438.770	518.630	523.030	468.128
UNIT OVER/(UNDER) RECOVERY - 29/04/2020 (SA c/l)	147.630	150.015	247.277	246.398	318.388
AVERAGE BASIC FUEL PRICE 27/03/2020 - 29/04/2020	303.040	295.237	378.630	388.337	270.689
AVERAGE UNIT OVER/(UNDER) RECOVERY 27/03/2020 - 29/04/2020	173.130	169.433	160.625	155.443	222.189

ANALYSIS MOVEMENT OF AVERAGE OVER/(UNDER) RECOVERY

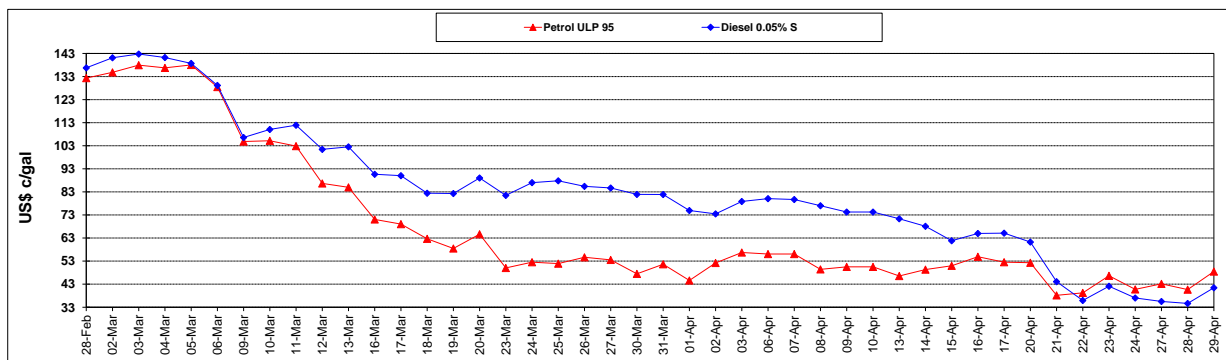
	PETROL 95	PETROL 93	DIESEL 0.05%	DIESEL 0.005%	ILL. PAR.
- MOVEMENT IN INTERNATIONAL PRODUCT PRICES	206.696	202.135	202.564	198.457	252.172
- MOVEMENT IN EXCHANGE RATE	(33.566)	(32.702)	(41.939)	(43.014)	(29.983)
AVERAGE UNIT OVER/(UNDER) RECOVERY 27/03/2020 - 29/04/2020	173.130	169.433	160.625	155.443	222.189

R/\$ EXCHANGE RATE - (R/\$18.4951 - 29/04/2020)

EXCHANGE RATE USED IN BASIC FUEL PRICE



INTERNATIONAL PRODUCT PRICES OF BASKET USED IN BASIC FUEL PRICE



BASIC FUEL PRICE IN SA CENTS PER LITRE

